

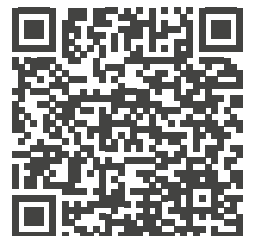


# HEPI

Cooling Solutions



## COOLING SOLUTIONS OVERVIEW



[WWW.HEPI.COM](http://WWW.HEPI.COM)



## WHY HEPI?

HEPI is a global leader in providing remanufactured parts, components, and comprehensive solutions for the mining and heavy equipment industries. Our commitment to customer success is rooted in our three pillars of value, guiding everything we do:



**Customer-Centric  
Excellence**



**Innovative Precision  
Unmatched Quality**



**Optimized Total Cost  
of Ownership**

## OUR SOLUTIONS

### MOBILE MINING SOLUTIONS

Complete Drivetrain Solutions for Mining Equipment

### FIXED PLANT PROCESSING

Crusher Liner Development, Parts, and Wear Products

### COOLING SOLUTIONS

Cooling System Applications, Remanufacturing Services, and Engineering Innovation

### DOM-EX

Used and Rebuilt Component, Parts and Services for Mining Equipment

**40+  
Multi-Use  
Facilities  
Across Seven  
Countries, Six  
Engineering  
Centers**

# DIVISION OVERVIEW



HEPI Cooling Solutions manufactures and supplies high quality, innovative products that can also be tailored to our customers' specific requirements. HEPI in-house engineering, product and service offerings, guarantee we can support customers throughout the full product life cycle while working to award the end user with the lowest total cost of ownership.

We take pride in our experience and reputation for delivering the highest quality products and service to our clients; assisting you with the design, manufacture and supply of suitable radiator, heat exchanger, or complete module solutions.



## THE HEPI COOLING DIFFERENCE

- High-quality cooling systems that reduce overheating and extend machine life expectancy
- HEPI Cooling Engineered products meet or exceed OEM specification while improving service life and reducing TCO
- Comprehensive service capabilities, including recoring, overhauls, and repairs
- Rigorous testing ensures reliability, including submerged test bath air pressurization and complete traceability



# HEPI

Cooling Solutions

# ENGINEERING INNOVATION



At HEPI, we are continuously developing our products to deliver innovative cooling solutions that increase productivity through longer service life, greater efficiency, and reduced downtime.

Central to this innovation is our in-house engineering team, combining technical expertise with advanced tools to meet customer-specific cooling demands, including:

- Advanced 3D modeling and design verification
- Computer-aided design (CAD) for improved accuracy and efficiency
- In-house engineering, optimization, and manufacturing integration
- In-house thermal heat rejection analysis software
- In-house FEA stress analysis software

Using our proprietary software, we also continuously enhance our bar and plate range to better align with the demands of each application—ensuring our systems perform where it matters most.



## CUSTOM SOLUTIONS

- Engineered to match the unique cooling demands of specific machines and operating environments
- Purpose-built designs to avoid ineffective systems that lead to costly breakdowns
- Built to deliver greater efficiency and extended component life by providing leading corrosion resistance and anti-clogging core designs

# SERVICE EXCHANGE

At HEPI, we supply, service, and overhaul all types of radiators and heat transfer equipment across mining, industrial, and transport sectors—delivering expert support and rapid turnaround.

## SERVICE EXCHANGE

To help our customers minimize downtime, we offer a comprehensive service exchange program supported by an extensive global inventory of OEM-compatible radiators. With the capacity to support entire fleets, our ready-to-install units ensure fast replacement, reduced disruption, and dependable performance across operations worldwide.



## RADIATOR CORES

We design and supply industrial radiator cooling systems built for reliable performance in all environments, using only the highest quality radiator cores. Our range supports a variety of markets including mining, agriculture, refining, rail, heavy transport, power generation, and more.



## HEPI COOLING ENHANCED PARTS

We also offer a range of new aftermarket products such as radiator panels, radiator caps and filler necks to suit most applications.



## EXTENDED WARRANTY

HEPI Cooling Service exchange radiators are backed by warranty periods up to 3 years (Condition's apply).



With our extensive range and abilities of bar and plate radiators, we are able to supply replacement radiators for a variety of customers across a range of industries.



## FEATURES AND BENEFITS

- Heavy-duty bar and plate design compatible with multiple engine configurations
- Reinforced corner blocks prevent premature failure of end tubes
- Anodized aluminium cores extend service life, reduce downtime, and resist corrosion
- Custom piping systems and accessories available on request
- Side band expansion slits allow even thermal movement to reduce cracking
- Open fin design helps prevent blockages and makes cleaning easier

## IMPROVED SERVICE LIFE

The fully welded aluminium bar and plate design offers a durable, serviceable solution—resistant to corrosion and debris impact. For large or high-vibration applications, structural integrity is maintained with corner blocks and expansion joints.



## COOLING PERFORMANCE

By using aluminium, we achieve superior cooling efficiency within the same space constraints. Our range of custom fin designs helps address airflow challenges that can impact performance.

## HEPI ENHANCEMENTS

HEPI offers multiple enhancements at a large price reduction to OEM.

# HEPI CHARGE AIR COOLERS



As a leading supplier of HEPI CACs, we stock a wide range to suit various applications.

HEPI bar & plate aftercoolers deliver innovative performance built for the harshest conditions in the mining environment. Plug & Play fitment ensures ease of fitment and compatibility with OEM components, while a trash resistant core and robust core reduce debris & extend service life and maintenance frequency. Optimised airflow and heat transfer reduce air intake temps, and engine EGT to improve combustion and extend component life cutting unplanned downtime. HEPI Cooling Solutions deliver dependable cooling outcomes that protect engines and budgets while reducing Total Cost of Ownership.

## FEATURES AND BENEFITS

- Patented heat resistant silicone grommets to eliminate cracking
- Offset fin design to reduce debris build up
- An internal baffle system that increases cooling efficiency by distributing air evenly across the core
- Cost saving - reduced fuel usage resulting in cost reduction





# HEPI

Cooling Solutions

## FANS

### QUALITY FANS

HEPI supplies a range of high-performance fans built to meet the demands of harsh operating environments. Manufactured to precise specifications using high-grade materials, our fans deliver consistent airflow, durability, and long service life. Each unit is rigorously tested to ensure reliability and performance that aligns with our quality standards.



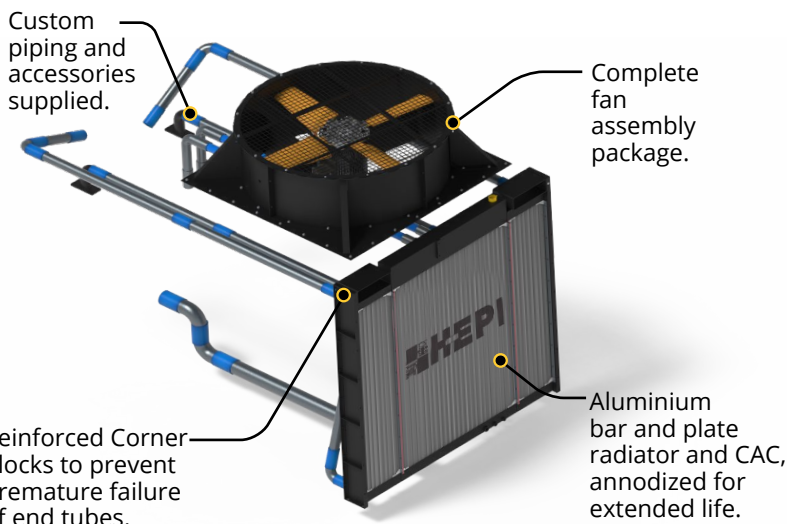
### FANS & COMPONENTS

HEPI is a leading distributor of fans and components, with a large inventory on hand to help reduce customer downtime. Through direct access to proprietary selection software, we can identify the right fan and parts for each application, delivering tailored solutions that meet specific performance and fitment requirements.



### FAN FEATURES

- Lightweight Design
- Easy to replace and repair components
- Flat packed for cost-effective transport
- Can be designed to increase airflow performance
- Reduced power is used to run the fan, resulting in cost reductions

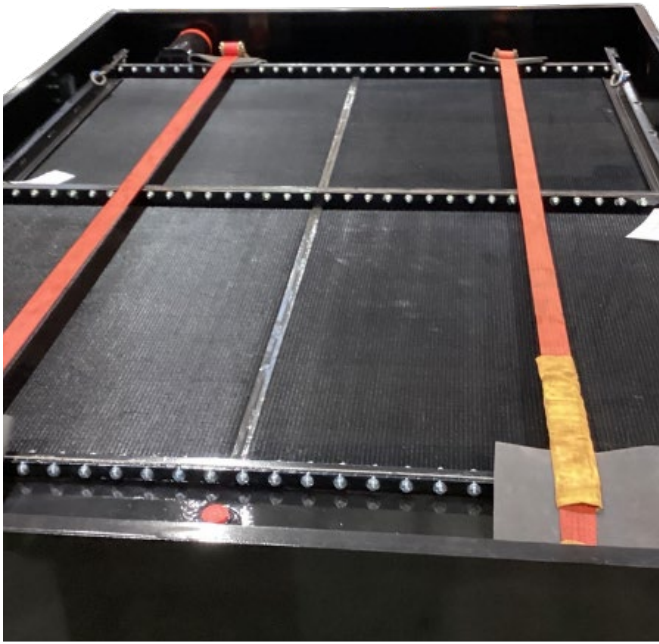


### CUSTOM DESIGNS

- HEPI can custom make fans to suit our customers' needs
- We design, supply and support our customers throughout the products lifecycle and continuously develop our products to maintain our advantage over competitors

## REPAIR & RETURN

HEPI delivers comprehensive repair and return services for cooling systems, ensuring every unit meets or exceeds OEM specifications. Our dedicated facilities carry out recoring, overhauls, and structural repairs with strict quality controls, including submerged air pressurization testing and full traceability. The result is reliable, long-life performance that reduces downtime and total cost of ownership.



## RAIL LOCOMOTIVE COOLING SOLUTIONS

In addition to mining equipment, HEPI provides specialized cooling system repairs for rail locomotives, a key growth sector. Our expertise in heavy-duty cooling technology allows us to restore radiators and charge air coolers for rail fleets with the same rigorous processes trusted across mining operations. This capability ensures rail operators benefit from extended component life, optimized efficiency, and reduced fuel consumption.

## INNOVATION IN COOLING TECHNOLOGY

HEPI continues to lead with innovation in cooling system design:

- **Fast Charger Cooler** – engineered for rapid, efficient thermal management in demanding environments.
- **KSN Transmission Cooler** – a unique water-to-oil bar-and-plate design (part no. HE0176022-N), exclusively manufactured by HEPI. With stock available in Perth, it represents a significant advancement in cooling performance and reliability.

These new technologies highlight HEPI's commitment to engineering innovation that enhances uptime and machine life.





# HEPI

Cooling Solutions

# CUSTOM COOLING SOLUTIONS

At HEPI, we are committed to the continuous development of cooling systems that deliver lasting value and dependable performance. Our turnkey solutions are engineered to withstand the harsh and variable conditions seen across mining, industrial, and heavy transport operations.

Each system is designed with the specific requirements of the site and equipment in mind—ensuring performance, fit, and durability align with operational demands.



# CUSTOMER EXPERIENCE



At HEPI, every customer—whether a regional contractor or a global mining operation—receives the same responsive, high-performance service. We deliver consistent, customer-centric excellence built on trust, transparency, and long-term value. Our clients know they can count on us for quality components backed by unrivalled service support—on time, on budget, and always with a commitment to zero harm.

Across a broad and growing client base spanning multiple industries, our reputation is built on more than reliability. We work closely with customers and suppliers to extend component service life, reduce downtime, and uphold the highest operational standards.

This relentless focus on innovative precision, unmatched quality, and optimizing total cost of ownership is what drives sustained growth—and reinforces HEPI's role as a trusted long-term partner in heavy industry.





# Global Locations Local Support



LinkedIn :  
[linkedin.com/company/h-e-parts-international](https://www.linkedin.com/company/h-e-parts-international)



Facebook :  
<https://www.facebook.com/hepartsinternational>



# HEPI



Mining Solutions

Cooling Solutions

Dom-Ex

Crushing Solutions

[WWW.HEPI.COM](http://WWW.HEPI.COM)

Contact Us Today!



HEPI replacement parts are compatible with the makes and/or models of the third-party equipment described. HEPI is not an authorized repair facility of these third parties and it does not have an affiliation with any manufacturers of these third-party products. All brands, original equipment manufacturer (OEM) part numbers or references are owned by the respective OEM entities or their affiliates. These terms are used by HEPI for identification and cross reference purposes only and are not intended to indicate affiliation with, or approval by the OEM, of HEPI or its products.