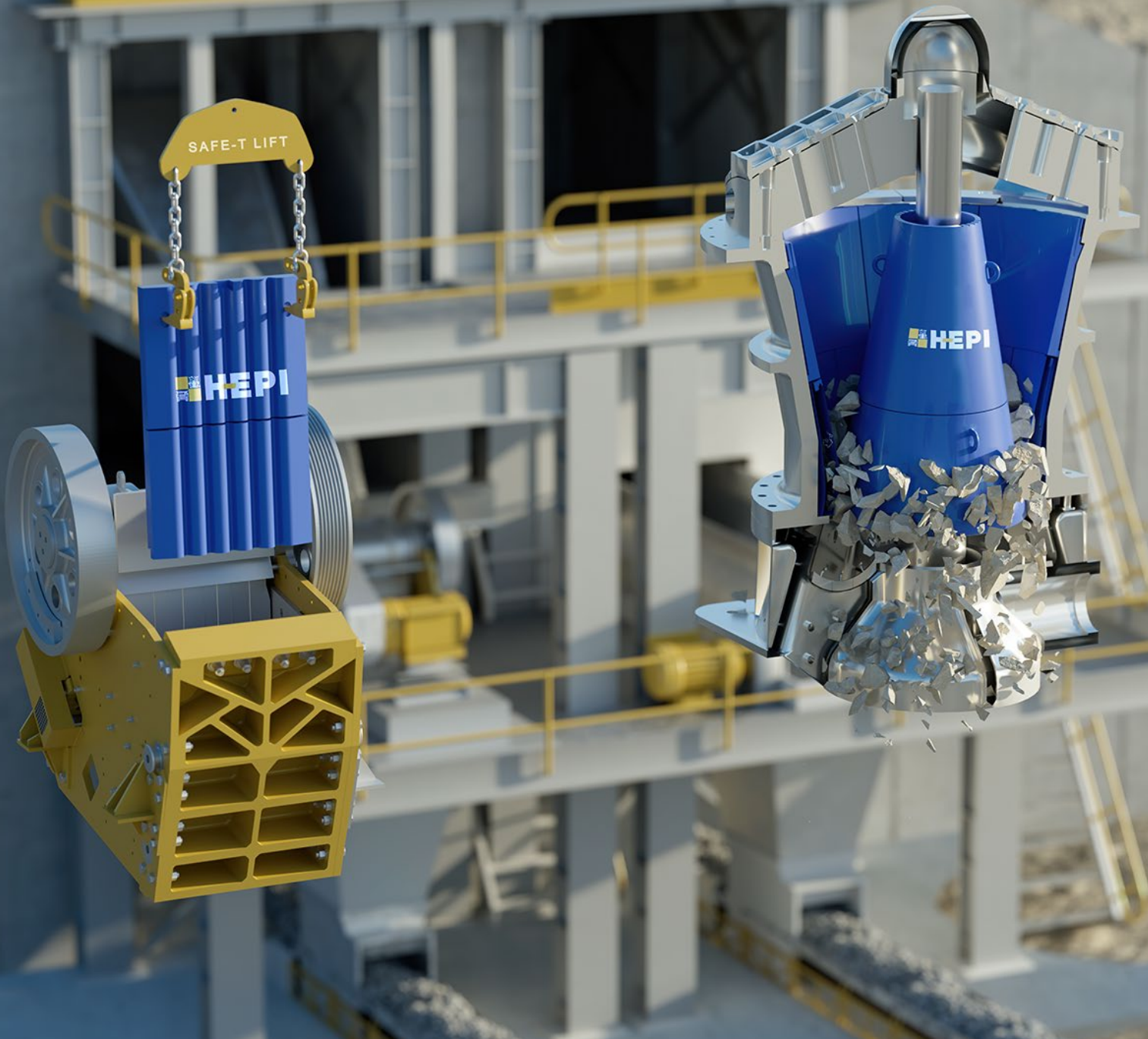


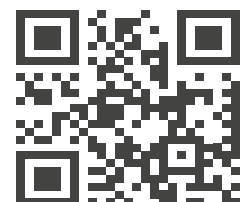


# HEPI

Crushing Solutions



## CRUSHING SOLUTIONS OVERVIEW



[WWW.HEPI.COM](http://WWW.HEPI.COM)



## WHY HEPI?

HEPI is a global leader in providing remanufactured parts, components, and comprehensive solutions for the mining and heavy equipment industries. Our commitment to customer success is rooted in our three pillars of value, guiding everything we do:



**Customer-Centric  
Excellence**



**Innovative Precision  
Unmatched Quality**



**Optimized Total Cost  
of Ownership**

## OUR SOLUTIONS

### MOBILE MINING SOLUTIONS

Complete Drivetrain Solutions for Mining Equipment

### FIXED PLANT PROCESSING

Crusher Liner Development, Parts, and Wear Products

### COOLING SOLUTIONS

Cooling System Applications, Remanufacturing Services, and Engineering Innovation

### DOM-EX

Used and Rebuilt Component, Parts and Services for Mining Equipment

**40+  
Multi-Use  
Facilities  
Across Seven  
Countries, Six  
Engineering  
Centers**



## FIXED PLANT PROCESSING SOLUTIONS

### CUSTOM CRUSHER LINERS, SPARE PARTS, AND SERVICES

HEPI offers innovative, custom-tailored and standard crusher liners for gyratory, cone, and jaw crushers, along with critical spare parts, field services, and off-site repairs. Our Crushing Solutions division supports the full asset lifecycle—delivering on-site service for shutdowns, diagnostics, and component changeouts, while our off-site team provides engineered solutions that meet or extend service life and reduce total cost of ownership.

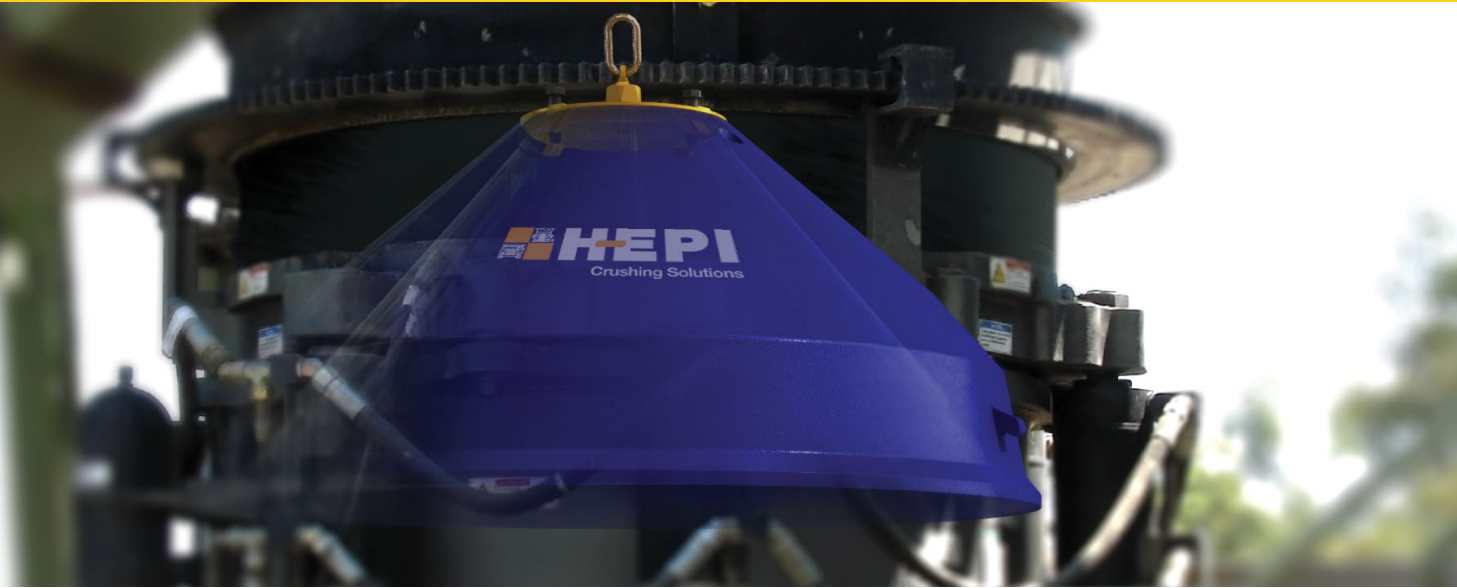
Through fit-for-purpose design, advanced engineering, comprehensive services, and a commitment to service excellence, HEPI Crushing Solutions helps operations achieve greater efficiency, reliability, and cost-effectiveness.



### CUSTOMER EXPERIENCE

HEPI delivers the same reliable service to all clients—big or small—ensuring consistent quality, on-time delivery, and strong safety performance.

With a large client base over a variety of industries, it is our ability to deliver on our promise to work with suppliers and customers to extend service life, reduce downtime, and work to a high standard that sees our customer base grow every year.



HEPI crusher liners are engineered for performance and reliability, available for most makes of cone, jaw, and gyratory crushers in both standard and custom profiles.

To support performance optimisation, liners are offered in three material tiers: MnElite for extreme wear resistance, MnPremium for enhanced durability, and MnStandard for dependable, general-purpose use.

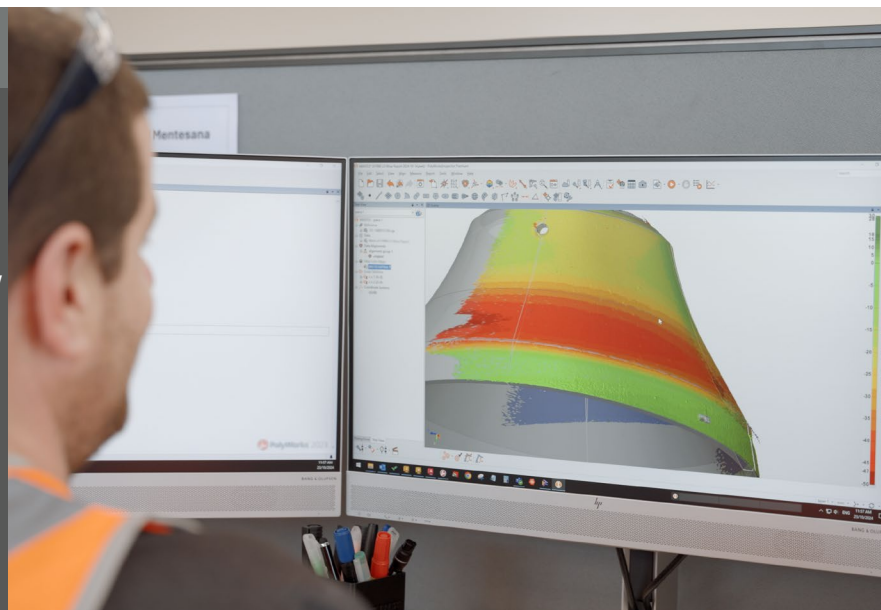
In certain applications, HEPI also utilises advanced Metal Matrix Composite (MMC) technology; proprietary inserts cast into high-wearing zones to not only promote rock fracturing, but also dramatically extend wear life. This advanced material is ideal for aggressive, high-throughput crushing and represents a capability few others can match.

All liner designs are backed by proprietary engineering tools, including advanced modelling software, to ensure fit-for-purpose solutions and the lowest possible total cost of ownership.

## INNOVATION AT OUR CORE

As the most innovative crusher liner supplier in the world, some of our innovations include:

- Flow controlled feed plates and chamber designs
- Custom crusher chambers to decrease power draw
- Fully corrugated primary crusher mantles
- Bespoke profile designs to increase throughput
- Self-hardening jaw crusher tooth designs
- Extended gyratory and jaw crusher chamber designs



# LINER DEVELOPMENT PROGRAM



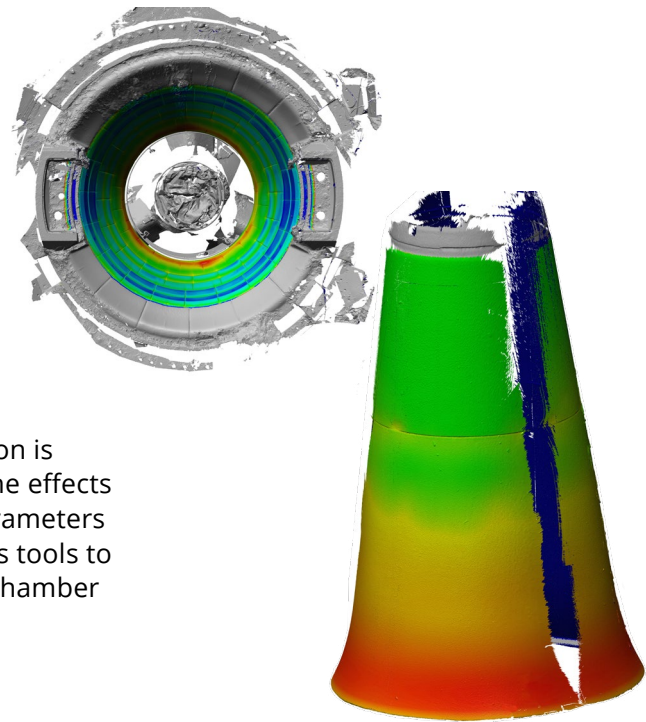
## LINER DEVELOPMENT PROGRAM

HEPI created our liner development program to provide customers with application-specific performance at the lowest total operating cost, by matching the optimum profile with the most appropriate grade of manganese steel chosen from one of the MnElite, MnPremium, or MnStandard ranges.

## ENGINEERING EXCELLENCE

Our approach to engineering excellence combines cutting-edge innovation, site-specific design, and a commitment to quality that drives reliable, lasting performance. This is reflected in the stringent liner development process outlined below:

- Customer target goals are defined
- Site specific conditions / applications assessed, liner life, parameters, and feed data identified
- 3D Laser scanning of new and worn liners.
- ChamberVision™ simulation conducted to predict wear on proposed new design and allow accurate benchmarking and performance estimates.
- CrusherVision™ simulation is conducted to estimate the effects of changing machine parameters and design stage analysis tools to prevent issues such as chamber packing.
- Combining the outputs of CrusherVision™ and ChamberVision™ allows changes in performance to be predicted as liners wear



## SITE-SPECIFIC LINER DESIGNS

Our HEPI liner development program goes above and beyond the normal industry practice of simply trialing a given set of liners. Instead we use all available information to provide a customised solution designed to achieve target goals on the first run, and to provide added value for any given operation.



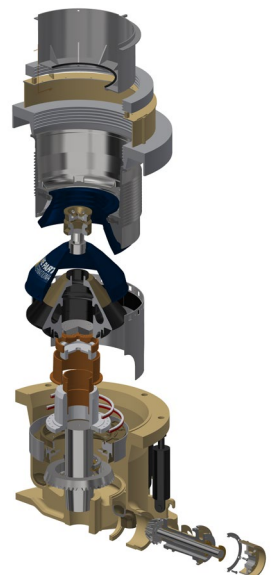
HEPI stocks parts for all major crusher brands, enabling prompt global delivery. Some of our inventory includes heads, bowls, counterweights, bushings, eccentrics, gears, and countershafts for most models of:

- Cone Crushers
- Jaw Crushers
- Gyratory Crushers
- Impactors (HSI, VSI)

At HEPI, we continuously add to our product offering and have engineering capabilities to extend this range at short notice.

HEPI offers compatible replacement parts with enhanced designs that improve productivity, reduce costs, and increase safety. Some HEPI innovations include:

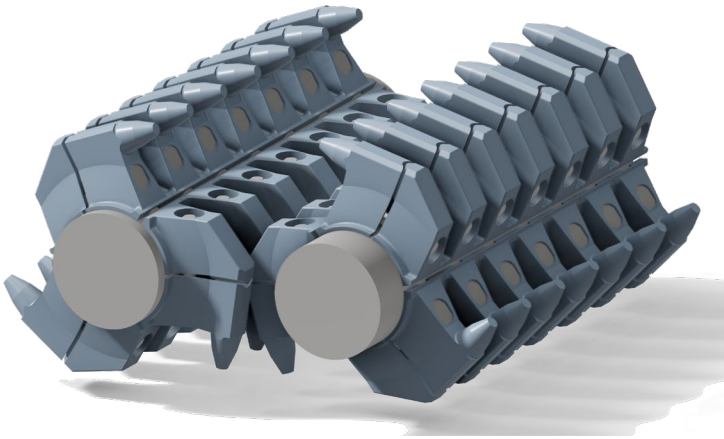
- Extended wear life spider guards for gyratory crushers
- Thread extensions for cone crusher bowls
- Ceramic liner and guards to suit most crushers
- Hydraulic and mechanical locking nuts and bolts



## SAFETY AT OUR CORE

All HEPI crusher liners are inherently designed with proprietary lifting cavities that allow our patented lifting devices to provide a safe, more efficient and cost effective method for change-outs and handling of crusher liners.

# WEAR PARTS AND PROCESSING EQUIPMENT



## MINERAL SIZER TEETH SEGMENTS

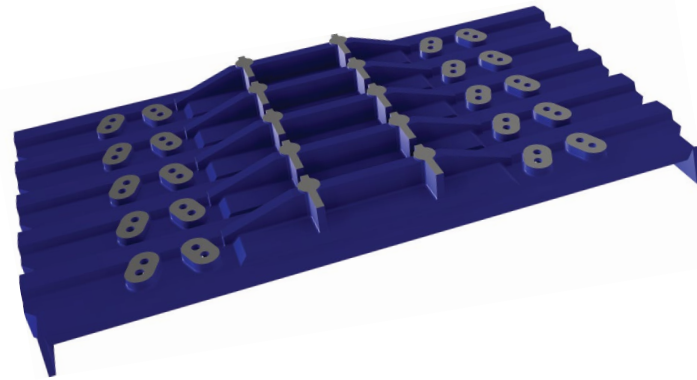
HEPI supplies a full range of sizer teeth segments and wear components to keep mineral sizers running longer. Beyond OEM-equivalent parts, HEPI delivers:

- Improved materials for extended life
- Enhanced designs to increase productivity
- Re-engineered setups for faster service
- Continual improvement through analysis and design updates

These innovations support effective wear management and deliver real total cost of ownership savings. Components are available for most makes and models of mineral sizers.

## APRON FEEDERS

HEPI designs and manufactures apron feeder parts and supplies a full range of feeder pans and components for diverse applications. Both design and metallurgy are tailored to site-specific needs—enhancing pan life and addressing common issues like product leakage.



## PROCESSING EQUIPMENT

HEPI supplies a comprehensive range of solutions for most applications and stages of comminution, via its patented proprietary Auspactor™ VSI, and HEPI 1100HD Jaw. HEPI provides full product lifecycle support—from parts supply and engineering to installation, training, servicing, repairs, rebuilds, and decommissioning. This end-to-end capability sets HEPI apart.



# HEPI

Crushing Solutions

## OFF-SITE SERVICE CAPABILITIES



HEPI off-site service division is able to offer a tailored repair and maintenance service, and in conjunction with in-house engineering; provide clients with best practice service that provides added value by extending service intervals and improving performance whilst reducing downtime and associated capital costs.

With a 3000m<sup>2</sup> repairs and manufacturing facility in Wattleup, WA, our service workshop capabilities include:

- Site Services Support
- Complete Rebuilds
- Gear Box Overhauls
- Machining
- Mechanical Fit-Outs
- Weld Reclamation
- Heat Treatment
- Surface Treatment
- Line Boring Services
- Light to Heavy Fabrication
- Non-Destructive Testing (NDT)



### WELDING & RECLAMATION CAPABILITY

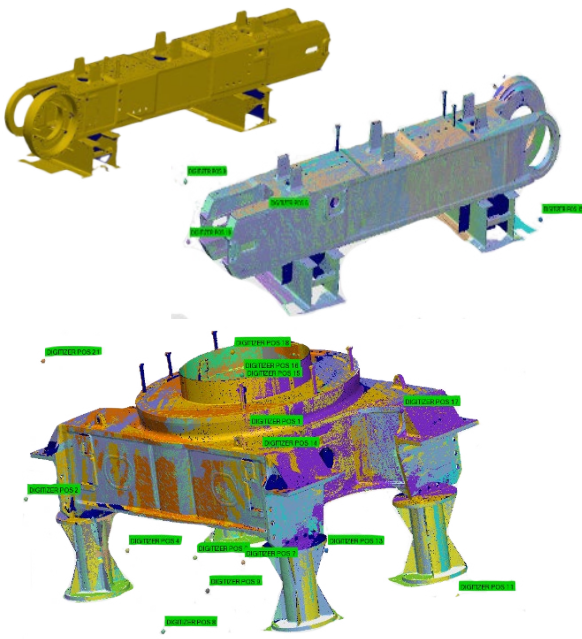
- Purpose-built for repairs such as head rebuilds / refurbishment, mainframe repairs/refurbishment, and topshell rebuilds
- 3-off Column and Boom Manipulators, comes with six meter reach
- 3-off Sub Arc Welding machines (1200 amps) running single, twin, and tandem wire configurations
- 25T, 20T, and 12T Rotator/Positioners, comes with custom built frames allowing components up to 60T to be turned

# ON-SITE SERVICE CAPABILITIES



HEPI Crushing Solutions provides full asset lifecycle support through in-house planning, engineering, drafting, and field services. On-site capabilities include:

- Mobile Maintenance Repairs
- Crusher Maintenance
- Comprehensive Machine Evaluations/Reports
- Diagnosis and Machine Fault Finding
- Labour Requests
- Rotable/Service Exchange Component Supply & Rebuilds
- Rebuilds, Modification, & Improvements
- Supply and Installation of Parts and Components (including wear components)
- 24/7 Coverage and Rapid Response Time
- Transport Frames
- Commissioning/Testing
- Scheduled Maintenance Support
- Hydraulic Cylinder Testing



## IN-HOUSE ENGINEERING SERVICES

- Engineering Certification
- 3D Model Concept Development
- Design Drawings
- Fabrication
- Shop Detailing
- Blasting
- Painting
- Machining
- Line Boring
- Liner Development
- On-site 3D Scanning



In addition to fixed plant solutions, HEPI Crushing Solutions also supports mobile equipment through repairs, new bucket builds, refurbishments, and reconditioning. Combined with HEPI Mining Solutions, we offer complete coverage for all mobile equipment maintenance needs.

## TRACK FRAME RECONDITIONING

Through innovative, high-quality engineering, we deliver a complete end-to-end reconditioning process for excavator track frame repairs, including:

- In-house blasting, NDT, inspection, and weld repairs
- Precision CNC machining of mounts and roller positions
- Continual improvement through analysis and design updates



## BOOMS & ARMS

HEPI specialises in complete refurbishment of all makes of excavator booms and arms. Components are stripped, NDT tested, and 3D scanned to ensure an accurate repair scope. Full in-house service includes line boring, blasting, painting, and reassembly by qualified fitters. Our ISO-accredited operations are backed by extensive engineering expertise, ensuring quality, safety, and serviceability. HEPI delivers reliable, end-to-end boom and arm repair.



## NEW BUCKET BUILDS & REFURBISHING

HEPI builds and refurbishes high-performance mining buckets designed to withstand the toughest conditions.

- Full and partial rebuilds, as well as new custom builds, completed at our Wattleup facility
- In-house NDT, line boring, and plasma-cut wear packages tailored to any size bucket
- Engineered for longer life and better performance with optimised design
- Painted to client specification and ready for dispatch

With decades of experience, we also provide on-site/off-site support and full after-sales service.

## CAR BODY REFURBISHING

HEPI provides complete car body refurbishments for excavators. Stripped, NDT tested, and 3D scanned to develop an accurate scope, each unit undergoes full rebuild at Wattleup before machining, paint, and final assembly. Our ISO-certified process ensures reliable quality and safety. We refurbish all makes of mining and construction equipment. One-stop shop support with expert mechanical, machining, and finishing capabilities.



## CUSTOM STAND & TRANSPORT FRAMES

HEPI designs and manufactures custom transport frames and stands to meet any mining or industrial requirement.

- High-precision CAD design and steel fabrication
- Custom-built frames and load stands for any application
- Built in collaboration with clients to suit unique specifications
- Fully engineered and manufactured in-house

From complex transport solutions to standard stands, HEPI delivers quality and versatility.





# Global Locations Local Support



LinkedIn:  
[linkedin.com/company/h-e-parts-international](https://www.linkedin.com/company/h-e-parts-international)



Facebook:  
<https://www.facebook.com/h-e-parts-international>



**BRAKE SUPPLY**  
HEAVY EQUIPMENT

Mining Solutions

Crushing Solutions

Cooling Solutions

Dom-Ex

[WWW.HEPI.COM](http://WWW.HEPI.COM)

HEPI replacement parts are compatible with the makes and/or models of the third-party equipment described. HEPI is not an authorized repair facility of these third parties and it does not have an affiliation with any manufacturers of these third-party products. All brands, original equipment manufacturer (OEM) part numbers or references are owned by the respective OEM entities or their affiliates. These terms are used by HEPI for identification and cross reference purposes only and are not intended to indicate affiliation with, or approval by the OEM, of HEPI or its products.